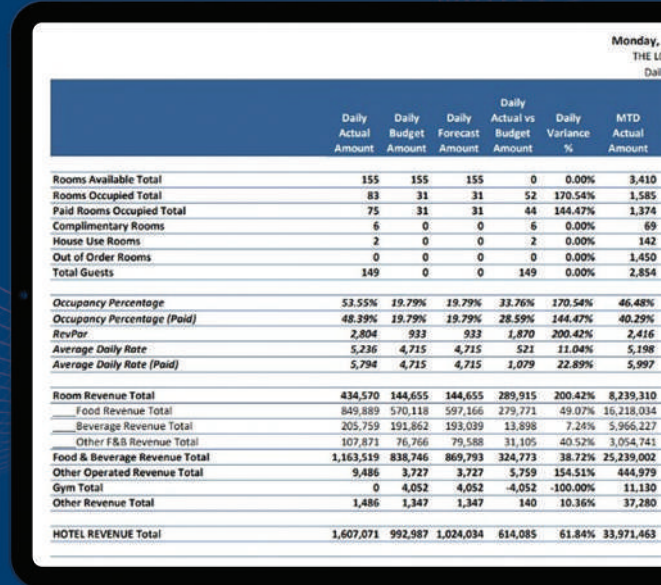


DP FINANCE

SCALABLE MULTI-PROPERTY ACCOUNTING



	Daily Actual Amount	Daily Budget Amount	Daily Forecast Amount	Daily Actual vs Budget Amount	Daily Variance %	MTD Actual Amount
Rooms Available Total	155	155	155	0	0.00%	3,410
Rooms Occupied Total	83	31	31	52	170.54%	1,585
Paid Rooms Occupied Total	75	31	31	44	144.47%	1,374
Complimentary Rooms	6	0	0	6	0.00%	69
House Use Rooms	2	0	0	2	0.00%	142
Out of Order Rooms	0	0	0	0	0.00%	1,450
Total Guests	149	0	0	149	0.00%	2,854
Occupancy Percentage	53.55%	19.79%	19.79%	33.76%	170.54%	46.48%
Occupancy Percentage (Paid)	48.39%	19.79%	19.79%	28.59%	144.47%	40.29%
RevPar	2,804	933	933	1,870	200.42%	2,416
Average Daily Rate	5,236	4,715	4,715	521	11.04%	5,198
Average Daily Rate (Paid)	5,794	4,715	4,715	1,079	22.89%	5,997
Room Revenue Total	434,570	144,655	144,655	289,915	200.42%	8,239,310
Food Revenue Total	849,889	570,118	597,166	279,771	49.07%	16,218,034
Beverage Revenue Total	205,759	191,862	193,039	13,898	7.24%	5,966,227
Other F&B Revenue Total	107,871	76,766	79,588	31,105	40.52%	3,054,741
Food & Beverage Revenue Total	1,163,519	838,746	869,793	324,773	38.72%	25,239,002
Other Operated Revenue Total	9,486	3,727	3,727	5,759	154.51%	444,979
Gym Total	0	4,052	4,052	-4,052	100.00%	11,130
Other Revenue Total	1,486	1,347	1,347	140	10.36%	37,280
HOTEL REVENUE Total	1,607,071	992,987	1,024,034	614,085	61.84%	33,971,463

KEY FEATURES & BENEFITS



Chart of Accounts

Support up to 16 characters divisible into one to five parts. Currency and statistics are kept in separate journals eliminating the need for contra accounts. The standard Data Plus chart is USALI 12th Edition compliant and includes the new Energy & Waste Management accounts.



Multi-currency

Any number of currencies can be supported in a single database with Foreign Exchange Gain/Loss tracked at the transaction level.



True Intercompany Accounting

Because all properties are maintained in a single database, Due To/From transactions are created automatically with forced balancing by property.



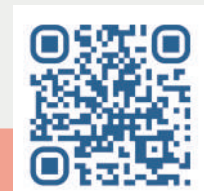
Journal Entries

Every transaction, regardless of module, posts in real time to the General Ledger including activity imported from other systems, spreadsheets or recurring entries.



Accounts Payable

Invoices and their accompanying images can be entered in a number of ways including integration with many third-party Workflow systems. Approval routing is supported via a web interface.



OVERVIEW

A fast and reliable accounting system that is scalable from a single boutique hotel of less than 20 rooms to a Multi Property management company field tested with 900 properties. Users are not restricted in their Chart of Account structure which allows easy and seamless transition of history when migrating from other systems.

Accounting systems need to always be in balance and Data Plus excels by using a database that automatically rolls back any incomplete postings. Included are modules for General Ledger, Accounts Payable, Accounts Receivable and Cash Reconciliation. The built-in financial statement generator supports consolidations and side-by-side comparisons.

FREQUENTLY ASKED QUESTIONS



Does Data Plus support bank reconciliation?

All standard bank file import formats are supported. Matching rules can be set up to automatically match bank and system transactions such as a credit card deposit recorded from the PMS system on one day and the payment received from the processor on a different day.



Can Data Plus import history from my old accounting system?

Data Plus has years of experience in importing data from other systems at the transaction level in order to allow users access to their old history.



Does DP Docs allow access to images from other systems?

DP Docs stores an unlimited amount of supporting documents from both Data Plus initiated transactions as well as external document stores such as Invoice Work-flow and Procurement systems.



How difficult is it to close a fiscal year?

Closing a fiscal year is a one-button operation. The system automatically closes the fiscal year when the last fiscal period is closed. Profit and Loss accounts are netted to determine the contribution to Retained Earnings and offsetting activity is generated to open these accounts with a zero opening balance in the new fiscal year.



Does Data Plus support VAT and Use Taxes?

Vat Tax reporting is supported with localized reporting for any required jurisdiction. Use Tax can be automatically calculated at the line-item level based on the expense account tax rate.



Are Daily Revenue and Daily Labor reporting supported?

Daily Revenue reporting is supported for actual currency and statistical values as well as budgets and forecasts using data imported from PMS and POS systems. Daily Labor reporting uses data imported from Time & Attendance systems to produce similar reports by Department and Position.



Does Data Plus support integration with other systems?

Data Plus integrates with over 200 systems commonly used in the Hospitality industry. Integrations can be automated to run at any frequency using FTP and API technologies.



Can I customize or move around columns in whatever order I want to?

You can change any of the columns around for each grid in whatever order you choose. Plus, it will save your changes so the next time you login the columns you rearranged will be preserved.

